



Welcome to

BIELDSIDE COTTAGE

Hello



CONTACT ME!

Call me

07855 837234

WhatsApp me

07855 837234

Email me

hello@villageholidays.co.uk

Join me on Instagram

[@VillageHolidays](https://www.instagram.com/VillageHolidays)

Welcome to your holiday home welcome pack – thank you for choosing to stay with us! We can't wait to host you!

In order to help prepare for your arrival, we have detailed as much useful information as we could think over the next few pages.

Here you'll find directions to and instructions for accessing the property and parking, details for pre-ordering any groceries ahead of your trip, information on all of the features of your home, where to find them, how to use and enjoy them, and much more.

Should you have any questions or need any assistance in planning your stay, please feel free to contact us at anytime.

We wish you a safe journey and a wonderful trip!

Laura

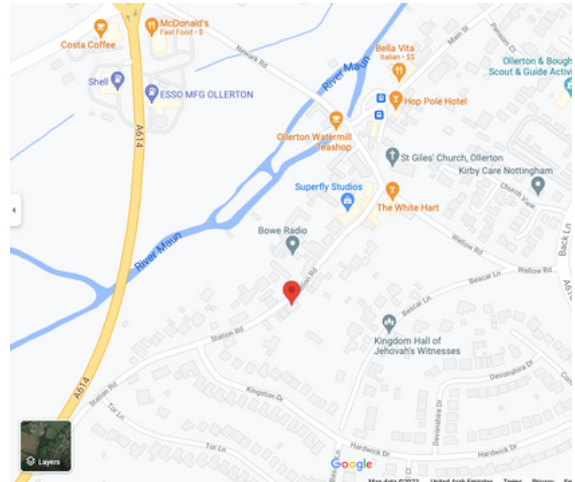
Planning your arrival...

CHECK IN FROM 3PM

Where to find us....

Our address is...
Bielside Cottage
Station Road
Ollerton
NG22 9BW

[Click here](#) or view the map on
Google Maps for directions.



Where to park....

Bielside Cottage allows for one car to be parked in front of the cottage, however parking spaces are not allocated and guests may occasionally need to park in an alternative space along the road.

There is also a free village car park 200 meters away should you wish to use this also. [click here](#) for location

Getting around....

A bus stop is situated just 300 metres from the property, with regular services to Newark, Mansfield, Nottingham and Worksop.

Click on the links below to see services and directions:

- [Hop Pole bus stop](#)
- [Hop Pole \(river\) bus stop](#)

How to access...

Station road can be accessed from Ollerton Village or directly from the A614

Please use caution when entering and exiting the A614 on to Station Road, as it gets busy during the day time.

We would also like to advise that Station road can get busy between 08:00-09:00 & 16:30-17:30

Getting inside....

Prior to your arrival we will send you a code to access the key lock box for Bielside Cottage

The key lock box is located to the right of the front window, next to the black drain down pipe.

First things first,

LET'S CONNECT

Wifi network

VILLAGEHOLIDAYS

Password

EnjoyYourSt@y

Or snap this



And don't forget to tag us in your photos!

#VillageHolidays @VillageHolidays

A few simple

HOUSE RULES

All we ask is that you treat the Cottage like you do your own home. We understand that accidents can happen here & there, & that's why we don't charge for things like accidentally breaking a glass! We just ask that you please be honest with us as we want to ensure our next guests enjoy their holiday home as much as we hope you do. And, of course, if anything is missing, please let us know so we can swiftly replace it for you!

Strictly no....

- Smoking, vaping or illegal substances
- Naked flames, so no candles please
- Pets, sadly pets are not allowed
- Eating or drinking in the bedrooms
- Shoes on in the home, please remove

Please remember...

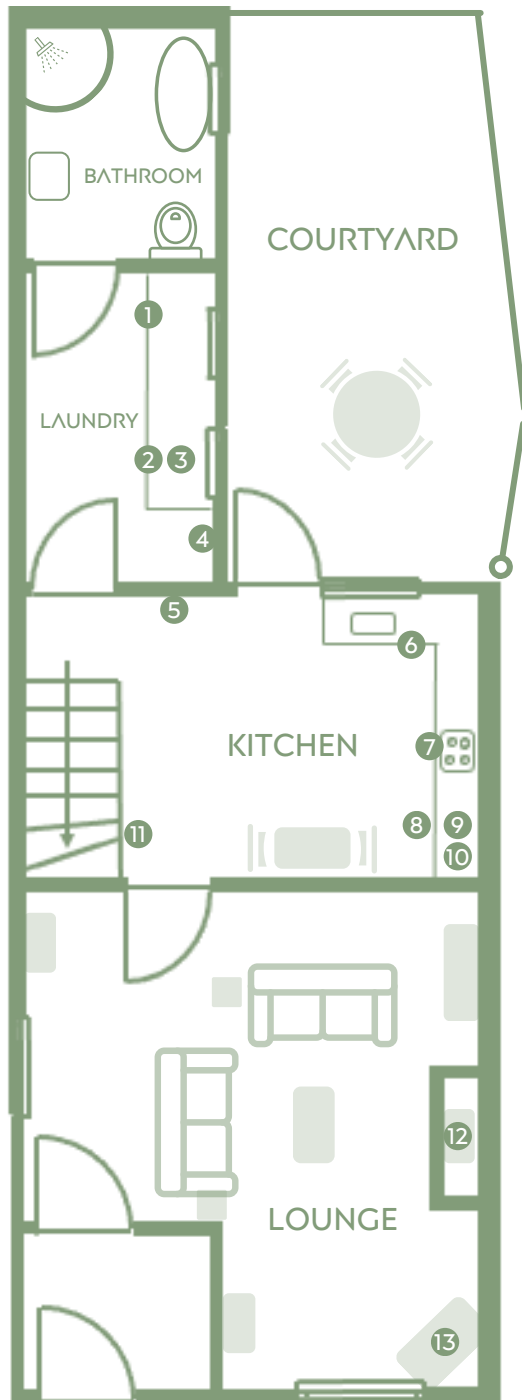
We have lovely neighbours, please respect them and keep noise to a minimum
Extensive cleaning will incur extra charges
Lost keys will result in a charge to replace
Checkout is 10am, please check out on time

Please enjoy the courtyard to the rear of Bielside Cottage, we would kindly ask guests not to go through the gate on to the top garden.

But most importantly, enjoy your stay!

LOCATE

Bielside Cottage



LAUNDRY ROOM

- 1. Freezer
- 2. Washing machine
- 3. Microwave
- 4. Vacuum, brush, mop

LOUNGE

- 12. Electric fire
- 13. Smart TV

KITCHEN

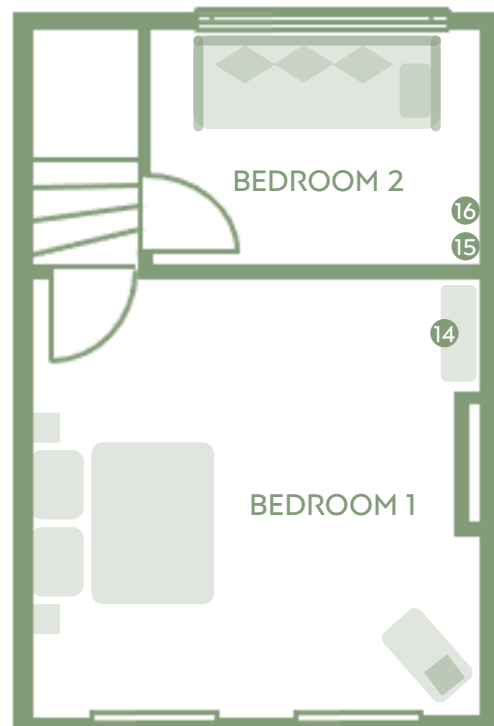
- 5. Thermostat
- 6. Dishwasher
- 7. Oven & Hob
- 8. Fridge
- 9. Coffee machine
- 10. Google home
- 11. Fire extinguisher

BEDROOM 1

- Kingsize Bed
- 14. Hairdryer

BEDROOM 2

- Single/Double Sofa/day bed
- 15. Wardrobe
- 16. clothes dryer, iron & board



THINGS TO KNOW...

Controlling the temperature...

The heating throughout the cottage is set at a pleasant temperature, but we appreciate you might want it higher or lower at different times. This can simply be controlled by turning the thermostat dial to the required level (it's on the wall next to the rear door)

Hot water is available 24/7 on demand.

We kindly ask that you do not change any of the settings on the boiler itself or the water settings within the thermostat. If you need any help, just give Laura a call or drop her a WhatsApp.

Getting things delivered...

The cottage is on the main road half way down the street. Delivery and taxi drivers might not instantly know of the location. Don't worry, the easiest way to explain the location is the house next door to Mistletoe Cottage "the one with green windows & fence"

If you wish to order groceries - a number of local supermarkets including Tesco, Morrisons, Asda, Sainsbury's all deliver - the address is Bieldside Cottage, Station Road, Ollerton, NG22 9BW.



THINGS TO KNOW...

Rubbish & recycling...

Please try to recycle what you can - there is a list of what can be recycled under the kitchen sink and also on the grey bin.

Our bins are located in the rear courtyard. We also have a glass recycling box for bottles and jars. our bin day is Friday and we will ensure the bins are left out and replaced in the courtyard

Laundry...

There is a utility room with washing/drying machine and air dryer, as well as detergent and fabric softener. Instructions for use are detailed above the machine.

Bike & golf clubs storage...

Please advise if you require storage



APPLIANCES...

Oven...

The oven is a simple to operate electric oven with grill.

Microwave

There is a microwave ready to use. Simply select the setting you need, set the power and turn the dial to the desired time.

Refrigerator & freezer

The fridge is integrated into kitchen units, you will also find an a freezer in the utility room.

Dishwasher

You're on holiday, so relax! There's no need to wash up! A fully-integrated dishwasher can be found built within the kitchen, dishwasher tablets are supplied.

Coffee machine

A Nespresso coffee machine is ready for you to make the best cup of coffee. We do provide a small supply of capsules, but also feel free to bring your favourites.



ENTERTAINMENT...

TV & Netflix...

You can access Freeview TV channels and Netflix in the living room.

WiFi & internet

Up to 70mps download speed can be enjoyed with the log in shared earlier in this guide.

Google Home...

We realise that not everyone is in to automation but we've added Google Home for you to have some fun and try it out! If you prefer not to have this for your stay, please advise and we will remove it. Alternatively you can simply unplug the device located on the kitchen work top. That said, you're on holiday, so sit back, relax and try a few of the below features!

- To set the living room temperature >> "Hey Google, set temperature to 22"
- To play Netflix >> "Hey Google, play Cocomelon on Netflix"
- To play the radio >> "Hey Google, play BBC Radio 1"
- To ask directions >> "Hey Google, how far away is the Major Oak?"
- To get recipes >> "Hey Google, how do I cook a Yorkshire pudding?"

The list of questions is endless and we hope you will enjoy it!

Books & board games...

Unfortunately due to Covid-19 restrictions these have been removed.



AMENITIES...

Everything, and the kitchen sink...

We provide a variety of household items for you to use during your stay to make it as convenient and relaxing as possible! Please let us know if you need assistance locating these items or need additional items.

The basics++...

- Hand sanitiser and facemasks
- Hairdryer
- Iron and ironing board
- Small kitchen appliances - Kettle, toaster, blender, kitchen utensils
- Coffee machine and coffee capsules
- Washing machine and tumble dryer with detergent and fabric softener
- Bathroom toiletries: shampoo, conditioner, body wash and body lotion
- Bath towels, hand towels and facecloths

Family items on request...

- High chair
- Baby cot
- Infant bed rails
- Playmat
- Baby bottle steriliser
- Infant & children's utensils
- Toilet training essentials



SAFETY & SECURITY...

Fire protection...

Smoke detectors are located in the kitchen and stair way (outside the bedrooms).

A fire blanket, fire extinguishers and carbon monoxide alarm are located in the kitchen, for added peace of mind.

There is a telephone box 300m away near the bus stop should you need to call the emergency services, along with the village defibrillator.

Although small please familiarise yourself with means of escape to the front and rear of the property in case of fire.

Please note, smoking, vaping and naked flames - such as candles - are strictly prohibited.

Water & electricity shut off...

Water - The main water shut off valve is located Located under the sink in the kitchen.

Electricity - The fuse box is located in the kitchen wall cupboard. Please only reset a tripped switch once and let us know so we can investigate the cause.



Planning your departure...

PLEASE CHECK OUT BY 10AM

Thanks for staying with us....

We hope you have enjoyed your stay at our holiday home. Please note that departure time is at 10am on your designated date of departure. We kindly ask that you check out on time since our team require much longer to clean due to Covid-19 related protocols.

Before you leave, we just ask a few favours to help us prepare for our next guests.

Rubbish & recycling...

Please take all rubbish bags, including bathroom rubbish bags, out to the bins in the courtyard. Please try to recycle what you can - there is a list of what can be recycled under the kitchen sink and on the grey bin.

Crockery & dishwashing

Please load any dirty dishes into the dishwasher and run it on the normal cycle.

If you have had any breakages - we understand accidents happen - please let Laura know by WhatsApp or leave a note so we can replace for our next guests.

Security & keys

Please ensure all windows are closed and locked and return the key through the letterbox on departure.

CONTACTS

Police/Fire/Ambulance 999

Village Holidays (Laura)	07855 837234
NHS Direct (24h medical advice)	111
Ollerton Doctors' Surgery	01623 703266
Ollerton Dental Clinic	01623 860574
National Gas - Emergency	0800 111999
Severn Trent Water - Emergency	0800 7834444
Western Power - Emergency	0800 6783105
Local Taxis...	
Abbey Taxis	01623 825546
AAA	01623 835656
AJ's Taxi	07771 475767

Please note, taxis are not always available at short notice so we recommend booking in advance of your trip.

And finally,

THANK YOU

for booking with us!

We wish you a safe journey and look forward to welcoming you to Bieldside Cottage

Should you need any advice or recommendations prior to your arrival please don't hesitate in contacting me.

Laura x

P.S...

TO FIND OUT MORE ABOUT OUR FAMILY RUN BUSINESS AND LOTS OF INFORMATION ON OUR LOCAL AREA, INCLUDING RESTAURANTS, PUBS, CAFES ALONG WITH ACTIVITIES, WALKING AND CYCLING ROUTES. PLEASE VISIT OUR WEBSITE

WWW.VILLAGEHOLIDAYS.CO.UK